

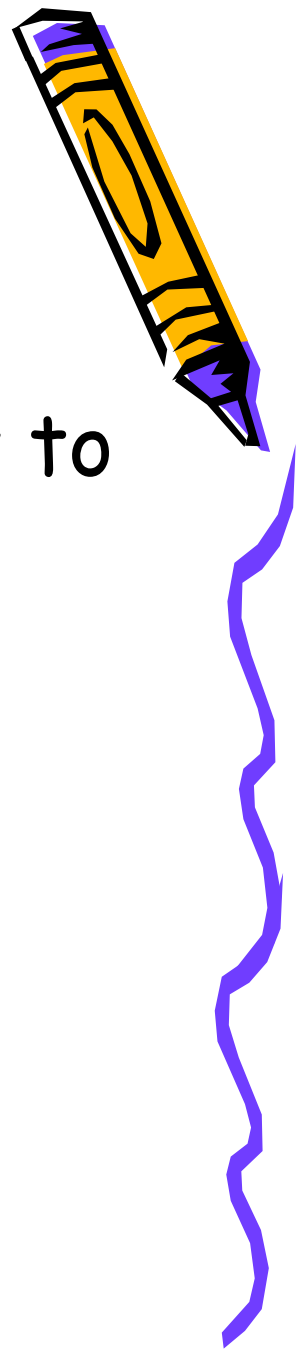
# PICAXE etc

From Peru to present  
Tim(othy) Clark (eclipse)



# Apologies

- Sorry for the suckyness, I am new to this!!
- Sorry for the microsoftness
- Sorry if I go on for too long



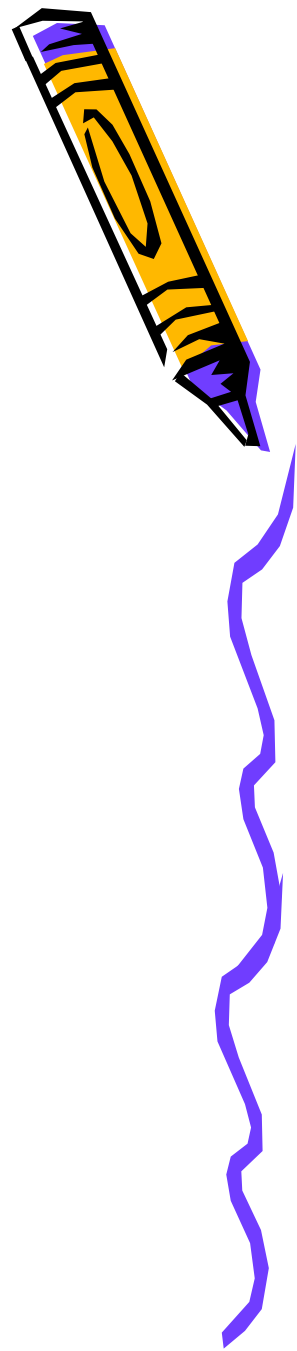
# In Deepest Peru

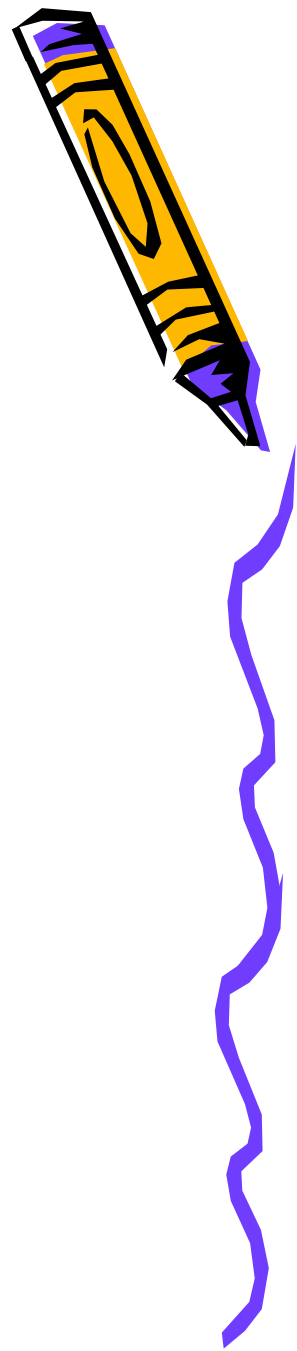
- Peru 2005
- Mmmm computer control
- Time in deepest Peru = lots of things to do when I got back



# Now onto PICAXE

- PICAXE = PIC + Bootstrap
- PICAXE = fluffy + cuddly
- Download program in circuit
- BASIC like language
- Program Editor





Programming Editor - [C:\DOCUMENTS AND SETTINGS\TIMMY DOCUMENTS\TRAIN CONTR...

File Edit Simulate PICAXE View Window Help

bas 1

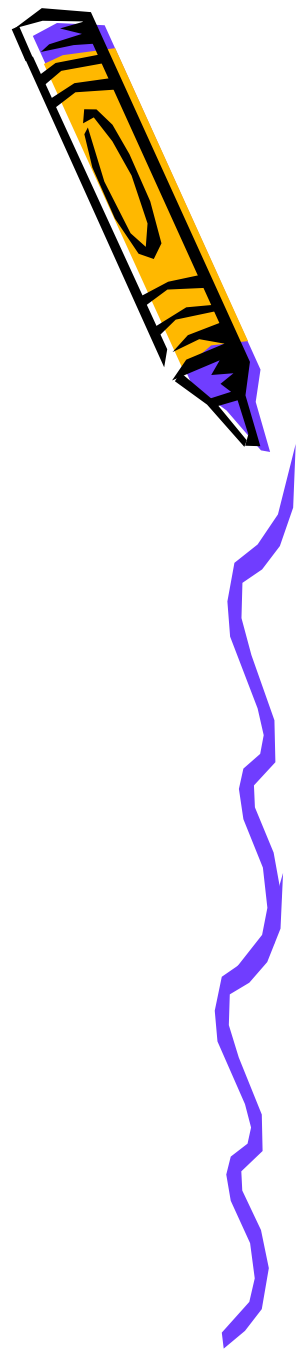
```
19         toggle 1
20         serout 0,N2400,(8,8,8,32,32,32,8,8,8)
21         next b2
22         low 1
23         low 2
24         'setint %10000,%10000
25         serout 0,N2400,(13,12,"**")
26
27 start:   serout 0,N2400,(13,10,">")
28         serin 3,N2400,b0,#w3
29         if b0="s" then speed
30         if b0="d" then direction
31         if b0="t" then test
32         if b0="r" then main
33         if b0="h" then hard
34         goto error
35
36 direction: if w3=1 then dirhigh
37           if w3=0 then dirlow
38           goto error
39
40 dirend:  pause 10
41         serout 0,N2400,(13,10,"D: ",#w3)
42         serout 0,n2400 (13,10 "T: " #nin4)
```

PICAXE-08M mode PICAXE-08M 8MHz CAPS NUM INS 7/11/2007 5:12 AM



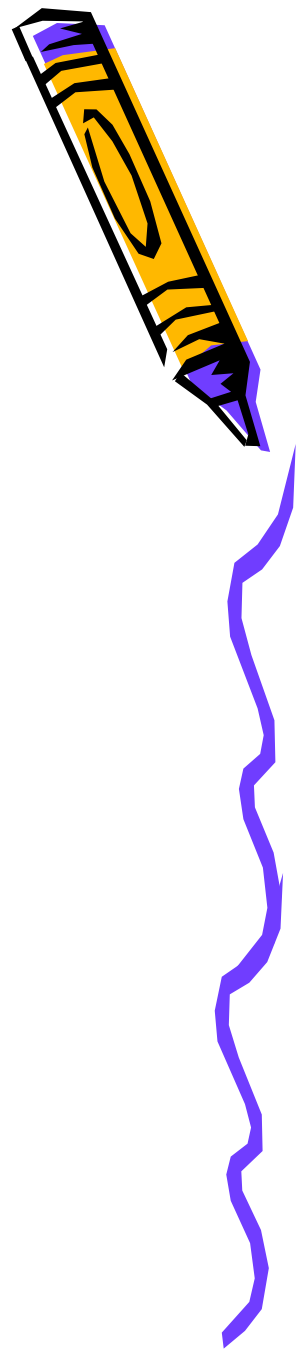
# Language

- BASIC like syntax
- High 2
- Low 2
- Pwmout 2, 100, w3
- Serin 3, N2400, b0, #w3



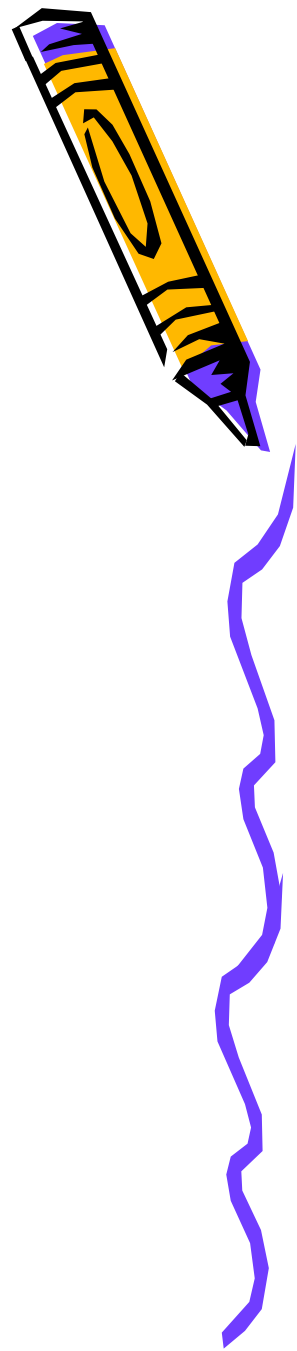
# Where to start?

- HyperTerminal
- WOW
- Serial in + PWM
- WOW



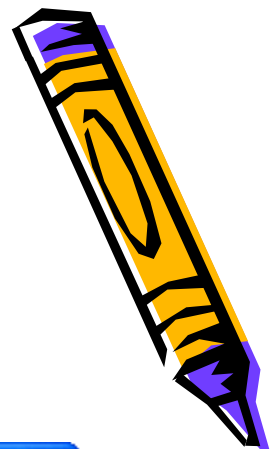
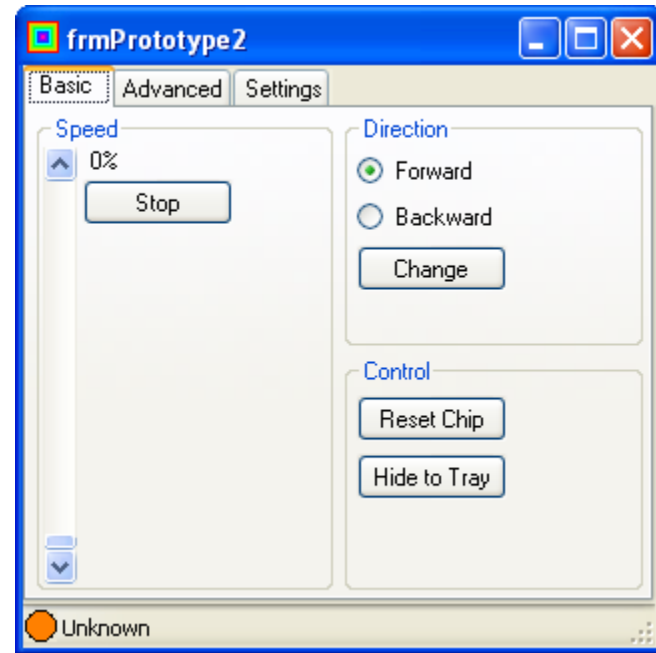
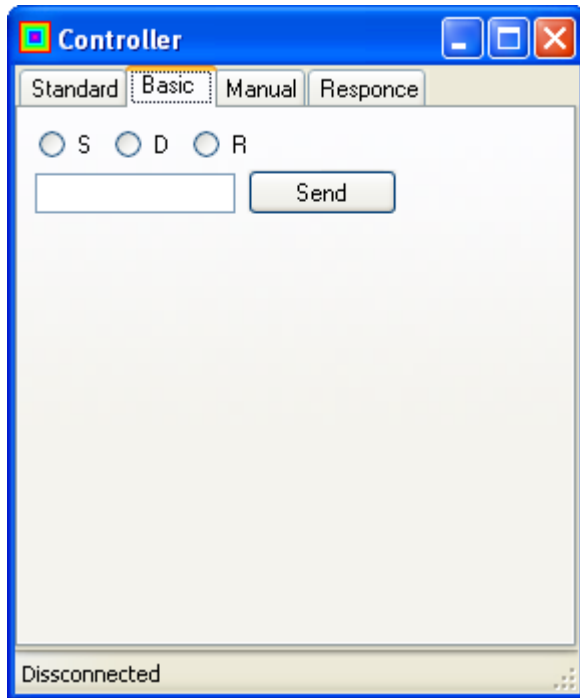
# Improvements

- + more circuitry etc
- + even more circuitry etc
- Ewww Visual Basic

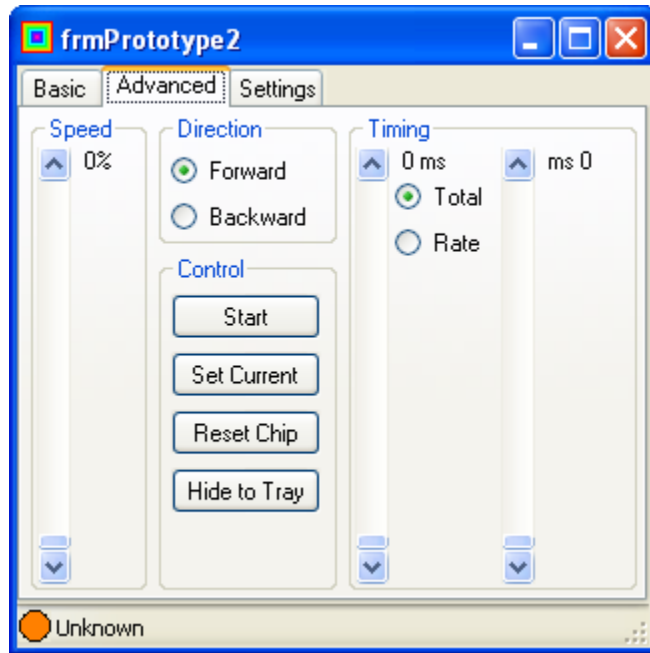




# Now for the UI



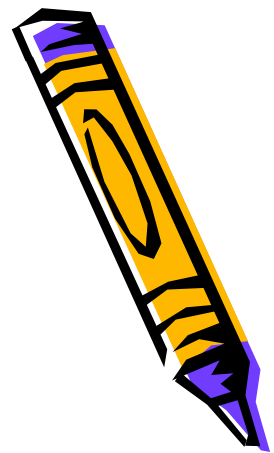
# Now it gets whizzy



- Smooth Changes
- Network Control
- More to come yet

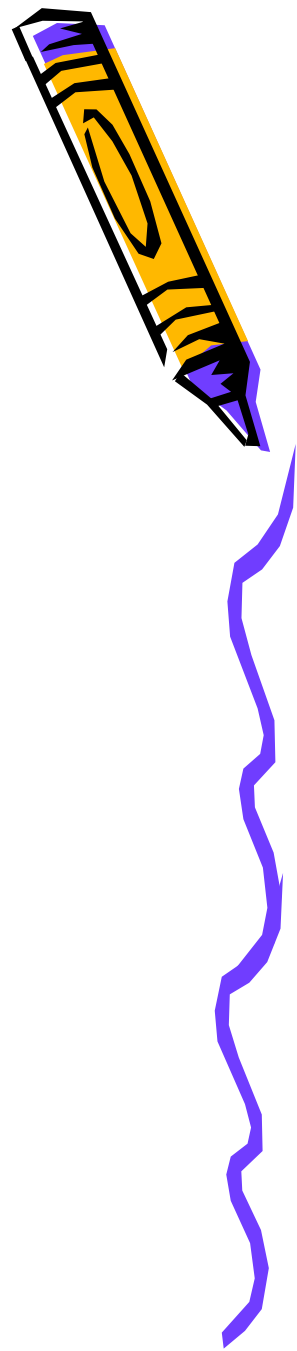


DEMO!



# What Next

- Change Language
- Fix transistor bug
- Add input detection
- Add major programming



Any  
Questions?

